

ICP Analysis

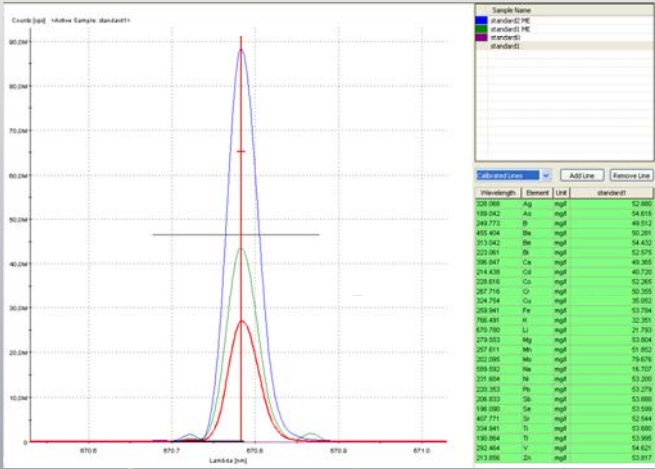
Description

The **Inductively Coupled Plasma Atomic Emission Spectrometer (ICP spectroscopy)** allows the titration of almost all the elements of your samples in minutes thanks to the power of **argon plasma (> 8000 °C)**. The analysis of solids necessary needs a prior step of mineralization, either acid in temperature and under pressure, or by alkaline fusion.

Conditions

- Directly analyzable samples
 Inorganic Powder dispersion (< 100µm) et aqueous solutions
- Analyzable samples after mineralization step
 Non-organic powders and solids
- Absolute Quantification
 1/10 ppm precision

Results



Data table
 Absolute quantification

InS
 Innovation
 Nanomaterials
 Strategy

Zone Industrielle Lyon Nord
 450, Rue Ampère
 69730 Genay
 France

Telephone: +33 4 78 72 78 48
 Fax : +33 4 78 91 23 05
 Email: contact@inslog.com

